



EVER PRIME
RESIDENCES

— *by Anocha* —

EVER PRIME
RESIDENCES

KARON - PHUKET





DISCOVER YOUR FUTURE HOME

Live Life Above It All on a gentle hillside in the heart of Karon, Phuket. Ever Prime Residences is the new premium landmark in Karon with 449 Residences offering breathtaking sea, mountain, and city views.

Designed with modern aesthetics, this 8-level residence across four buildings seamlessly blends contemporary elegance with nature. Each unit features sleek curves, white and off-white palette, and slate-toned accents that create a timeless, sophisticated atmosphere.

Prime Location, Effortless Convenience, Endless Amenities

Strategically located just a short walk to Kata Beach, Ever Prime Residence's prime location ensures effortless access to Phuket's finest shops, restaurants, and attractions, balancing serenity with urban connectivity.

Ever Prime Residences offers an unparalleled range of amenities designed for comfort, wellness, and convenience at your doorstep offering an unmatched lifestyle in a prime Karon location.

Discover your future home at Ever Prime Residences.



DISCOVER UNPALLELED FACILITIES

Ever Prime Residences in Karon offers an exceptional lifestyle with a comprehensive range of amenities designed for comfort, wellness, and convenience.

Residents can unwind in double lap swimming pools, a breathtaking mountain and sea view rooftop pool, a luxurious spa, and dedicated Thai massage facilities.

Fitness and recreation options include a fully equipped gym, sauna, ice baths, yoga spaces, a squash court, a golf simulator, and a vibrant games room. The development also features the first 24-hour Villa Supermarket, coffee shop, coworking space, business hub, and library for work and relaxation.

A stylish lobby welcomes residents and guests, while EV charging stations and secure underground parking add to the convenience. With beauty salon services, secure storage rooms, and every modern comfort at your doorstep, Ever Prime Residences sets a new standard for luxury living in the heart of Karon.

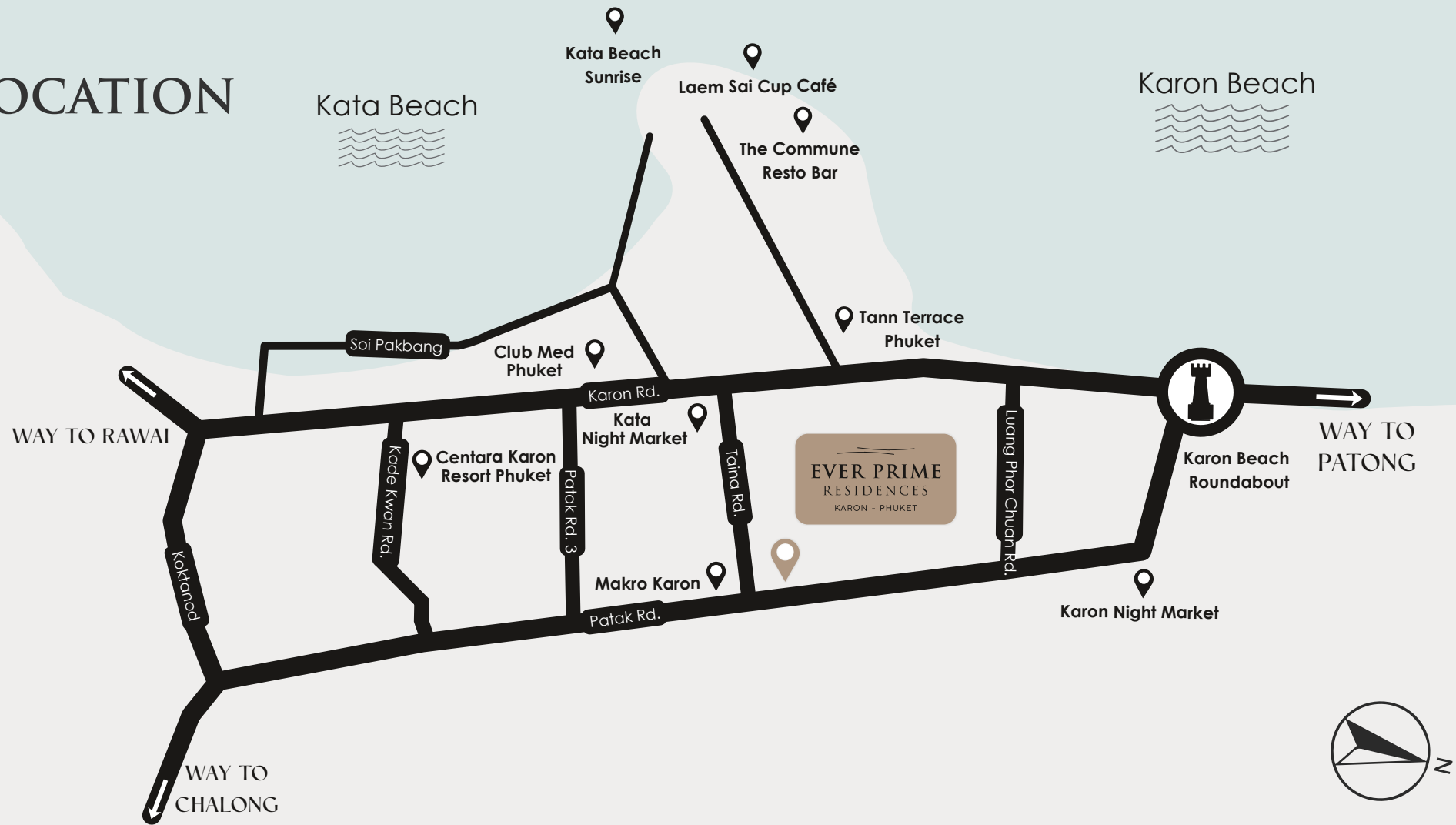
*COMPUTER GENERATED AN IMAGE

*COMPUTER GENERATED IMAGE

ROOF TOP POOL



LOCATION



*COMPUTER GENERATED IMAGE

DEPARTMENT STORES & LIFESTYLE SHOPPING MALLS		LEISURE & LIFESTYLE		INTERNATIONAL SCHOOL		HOSPITAL		BEACHES	
KATA NIGHT MARKET	0.8 KM.	DINO PARK MINI GOLF	0.9 KM.	ISP INTERNATIONAL SCHOOL PHUKET	0.6 KM.	HEALTH PLUS MEDICAL CLINIC PHUKET	0.2 KM.	KATA BEACH	0.9 KM.
KARON NIGHT MARKET	2.8 KM.	THE COMMUNE RESTO BAR	1.3 KM.	BCIS INTERNATIONAL SCHOOL PHUKET	8.2 KM.	KARON HEALTH CENTER PHUKET	2.9 KM.	KARON BEACH	1.4 KM.
ROBINSON LIFESTYLE CHALONG	9.0 KM.	CHALONG PIER	5.8 KM.	RUAMRUDEE INTERNATIONAL SCHOOL PHUKET	10.5 KM.	CHALONG HOSPITAL PHUKET	6.0 KM.	NAI HAN BEACH	8.2 KM.
CENTRAL PATONG	11.0 KM.	SKYLINE ADVENTURE PHUKET	5.8 KM.	OAK MEADOW INTERNATIONAL SCHOOL PHUKET	10.9 KM.	PATONG HOSPITAL PHUKET	10.1 KM.	PATONG BEACH	8.9 KM.
JUNGCEYLON SHOPPING CENTER	11.1 KM.	SIMON CABARET PHUKET	7.8 KM.	KAJONKIET INTERNATIONAL SCHOOL PHUKET	12.6 KM.	DIBUK HOSPITAL PHUKET	13.3 KM.	RAWAI BEACH	11.9 KM.
RAWAI SEAFOOD MARKET	11.3 KM.	FROGGY'S FUN PARK	11.1 KM.	HEADSTART INTERNATIONAL SCHOOL PHUKET	14.5 KM.	BANKOK SIRIROJ HOSPITAL PHUKET	16.1 KM.	KAMALA BEACH	19.7 KM.
CENTRAL PHUKET FLORESTA	14.9 KM.	TIGER KINGDOM PHUKET	14.8 KM.	QSI INTERNATIONAL SCHOOL PHUKET	17.8 KM.	BANKOK HOSPITAL PHUKET	18.3 KM.	SURIN BEACH	23.4 KM.

*COMPUTER GENERATED IMAGE

PROJECT INFORMATION

TOTAL LAND SIZE	6 RAI (APPROX.)
TOTAL UNITS	449 UNITS
LOCATION	KARON, PHUKET
PROJECT TYPE	LOW-RISE CONDOMINIUM 4 BUILDINGS (8 FLOORS), WITH UNDERGROUND PARKING
CAR PARK	50 %

UNIT TYPES

- 2 BEDROOM
- 3 BEDROOM
- 4 BEDROOM

EVER PRIME
RESIDENCES
by Anocha



FACILITIES



SUBJECT TO CHANGE WITHOUT PRIOR NOTICE

* THIS IMAGE IS A MONTAGE USED TO SIMULATE THE OVERALL CONCEPT OF THE PROJECT.



FACILITIES

- DOUBLE LAP SWIMMING POOLS
- OCEAN VIEW ROOFTOP SWIMMING POOL
- KID'S POOL
- KID'S PLAYGROUND
- HOT & ICE BATH
- SAUNA & STEAM ROOM
- SPA & THAI MASSAGE
- BEAUTY SALON & NAIL SPA
- FITNESS CENTER & YOGA
- EV CHARGING
- VILLA MARKET 24 HOURS
- CHIANG MAI COFFEE
- BUSINESS HUB + COWORKING SPACE
- LIBRARY
- WELLNESS LOUNGE
- LOBBY
- STORAGE ROOM SERVICE
- GAMES ROOM
- GOLF SIMULATOR ROOM
- SQUASH COURT



*COMPUTER GENERATED IMAGE



*COMPUTER GENERATED IMAGE



FITNESS CENTER



SAUNA

BEAUTY AND SALON

SAUNA AND STEAM ROOM

*COMPUTER GENERATED IMAGE



WELLNESS LOUNGE

*COMPUTER GENERATED IMAGE

SPA AND THAI MASSAGE

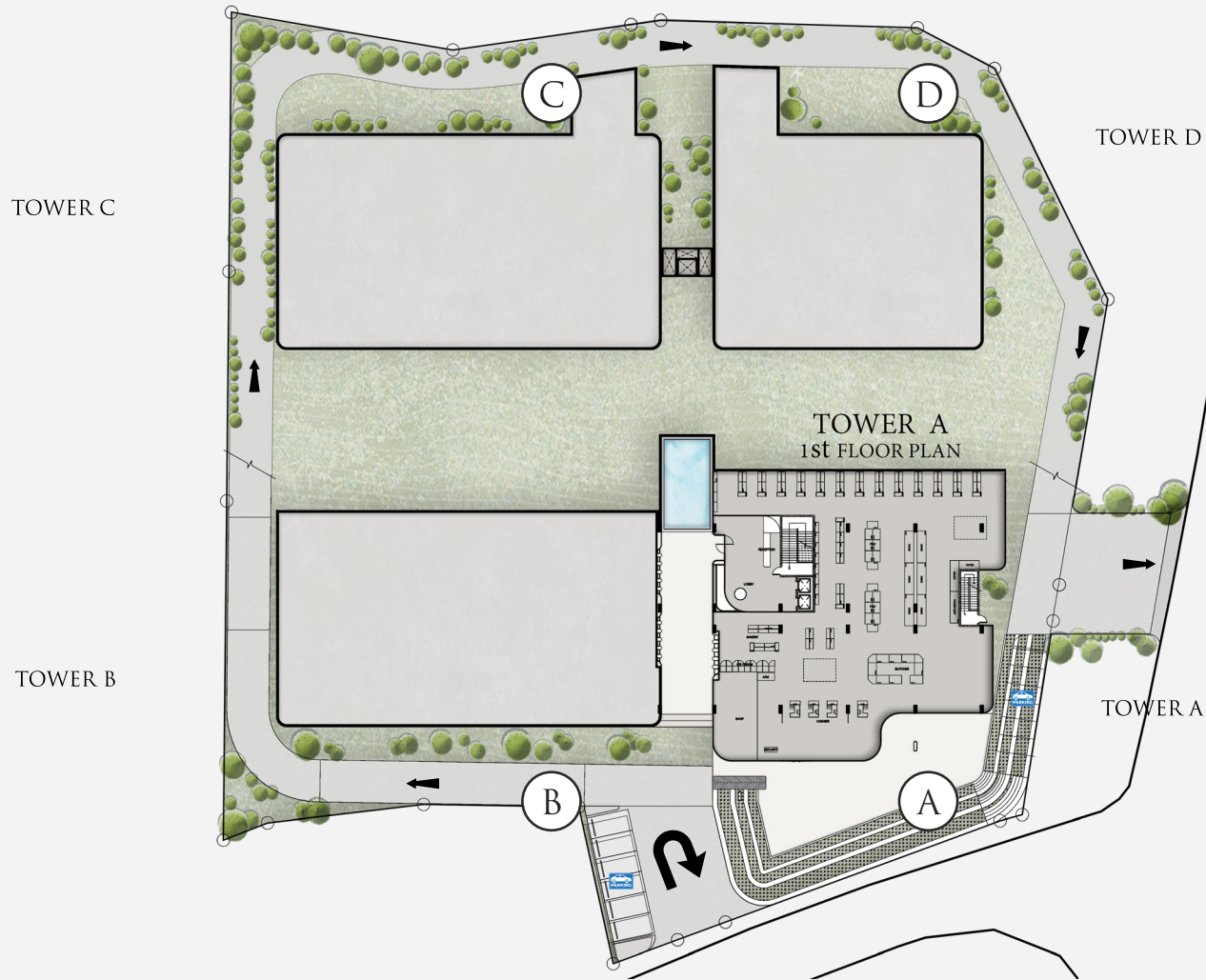


*COMPUTER GENERATED IMAGE

DISCOVER YOUR FUTURE HOME



MASTER PLAN



UNIT TYPE

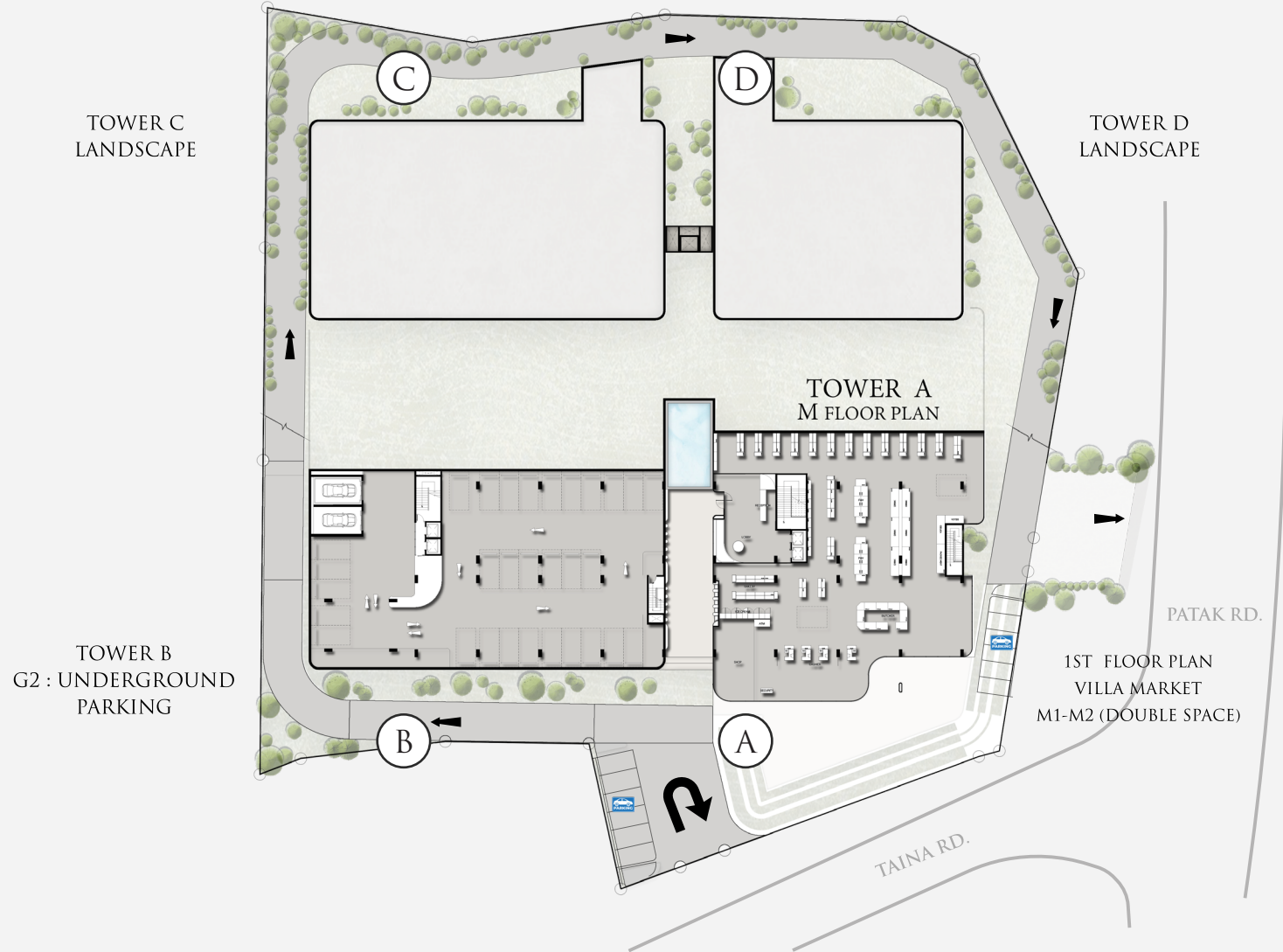
2 BEDROOM
■ 51.67/59.48

3 BEDROOM
■ 88.06/102.05

4 BEDROOM
■ 178.85/188.41

SUBJECT TO CHANGE WITHOUT PRIOR NOTICE

FLOOR PLAN 1



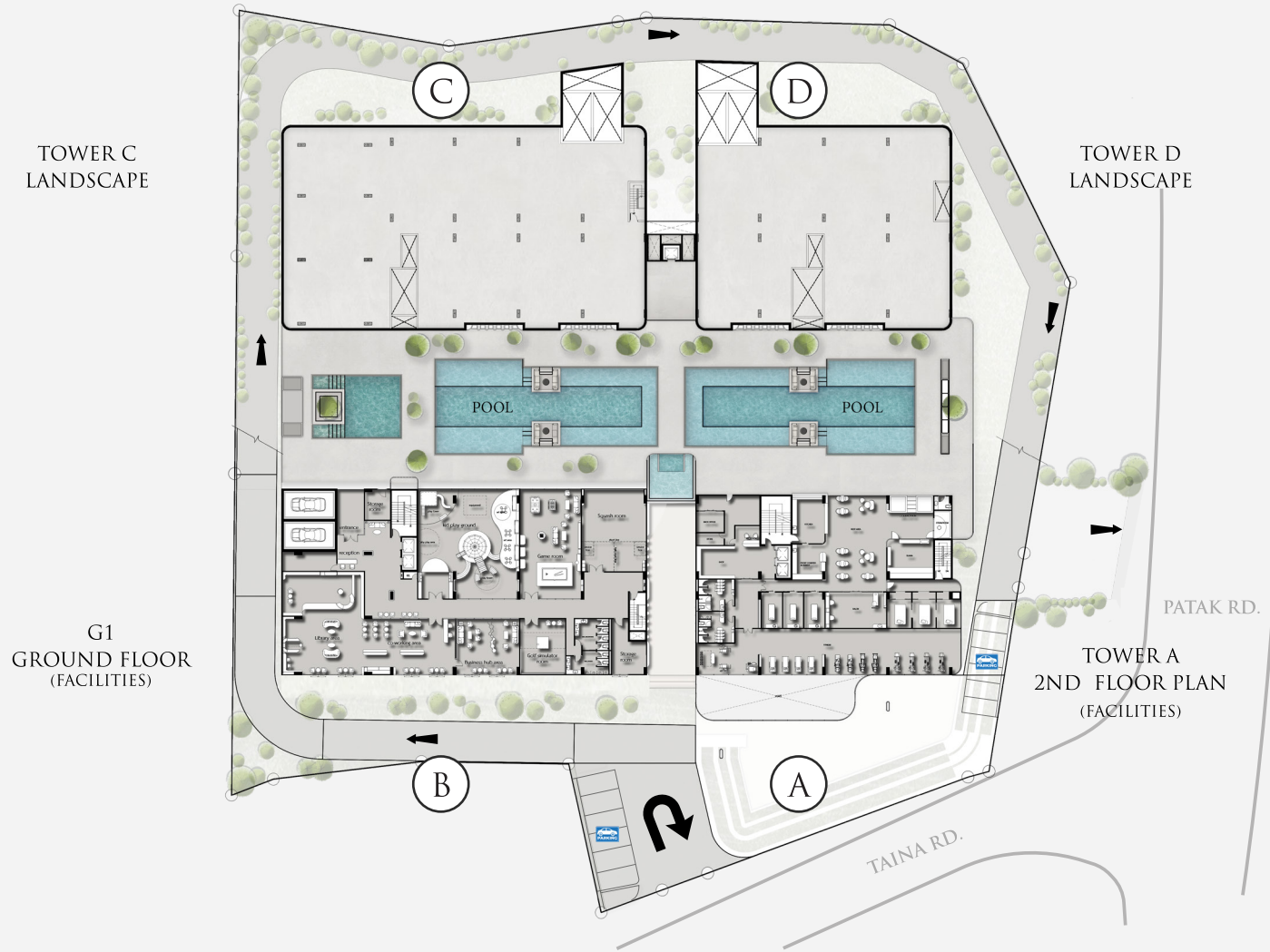
UNIT TYPE

2 BEDROOM
■ 51.67/59.48

3 BEDROOM
■ 88.06/102.05

4 BEDROOM
■ 178.85/188.41

FLOOR PLAN 2



TOWER C
LANDSCAPE

TOWER D
LANDSCAPE

G1
GROUND FLOOR
(FACILITIES)

TOWER A
2ND FLOOR PLAN
(FACILITIES)

PATAK RD.

TAINA RD.

UNIT TYPE

2 BEDROOM
■ 51.67/59.48

3 BEDROOM
■ 88.06/102.05

4 BEDROOM
■ 178.85/188.41

FLOOR PLAN 3



UNIT TYPE

- 2 BEDROOM
■ 51.67/59.48
- 3 BEDROOM
■ 88.06/102.05
- 4 BEDROOM
■ 178.85/188.41

FLOOR PLAN 4



UNIT TYPE

- 2 BEDROOM
■ 51.67/59.48
- 3 BEDROOM
■ 88.06/102.05
- 4 BEDROOM
■ 178.85/188.41

FLOOR PLAN 5



UNIT TYPE

2 BEDROOM
■ 51.67/59.48

3 BEDROOM
■ 88.06/102.05

4 BEDROOM
■ 178.85/188.41

FLOOR PLAN 6



TOWER C
G1 : GROUND FLOOR
(UNDERGROUND PARKING)

TOWER B
6TH FLOOR PLAN

TOWER D
2ND FLOOR PLAN

TOWER A
ROOFTOP PLAN



UNIT TYPE

2 BEDROOM
■ 51.67/59.48

3 BEDROOM
■ 88.06/102.05

4 BEDROOM
■ 178.85/188.41

FLOOR PLAN 7



TOWER C
1ST FLOOR PLAN

TOWER D
3RD FLOOR PLAN

TOWER B
7TH FLOOR PLAN

TOWER A
ROOFTOP PLAN



UNIT TYPE

- 2 BEDROOM
■ 51.67/59.48
- 3 BEDROOM
■ 88.06/102.05
- 4 BEDROOM
■ 178.85/188.41

FLOOR PLAN 8



TOWER C
2ND-8TH FLOOR PLAN

TOWER D
4TH - 8TH FLOOR PLAN

TOWER B
8TH FLOOR PLAN

TOWER A
ROOFTOP PLAN



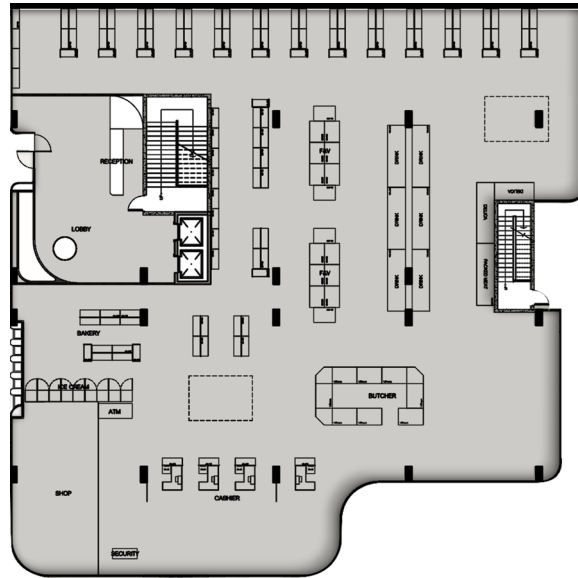
UNIT TYPE

2 BEDROOM
■ 51.67/59.48

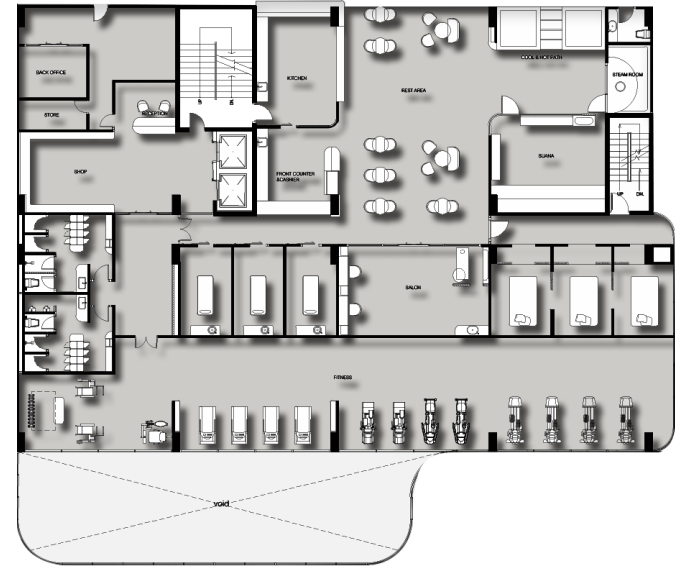
3 BEDROOM
■ 88.06/102.05

4 BEDROOM
■ 178.85/188.41

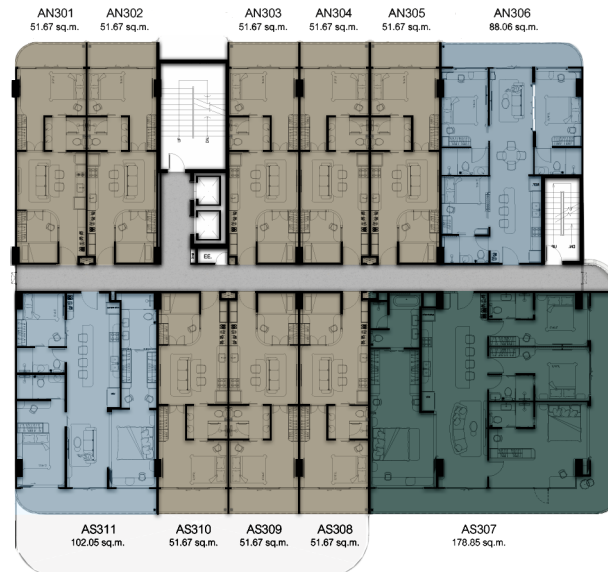
TOWER A



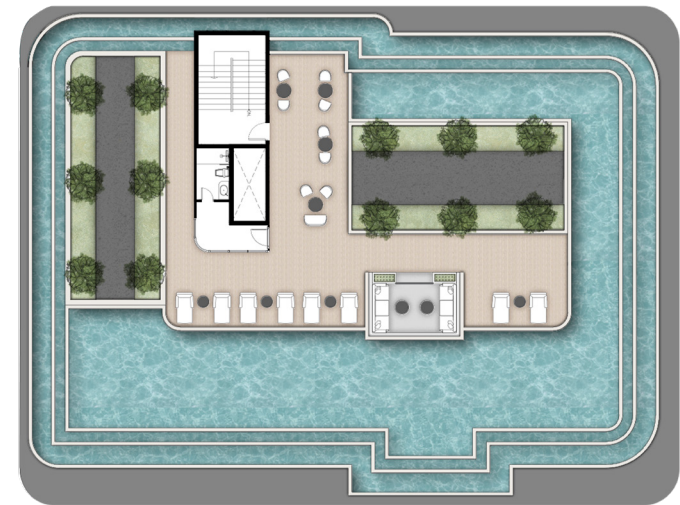
VILLA MARKET



FACILITIES

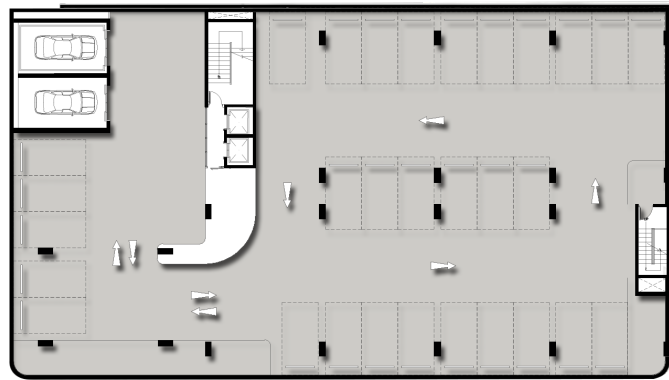


3RD - 8TH FLOOR PLAN

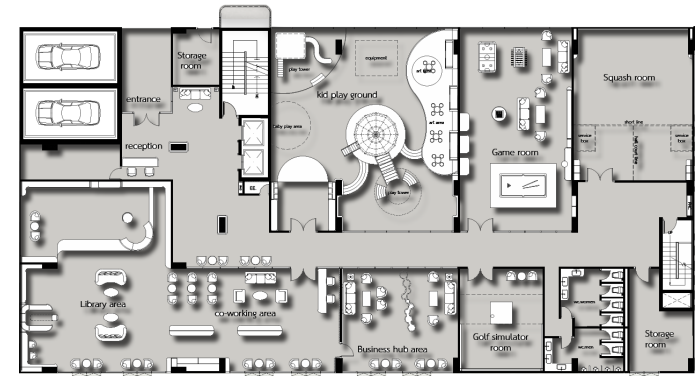


ROOFTOP

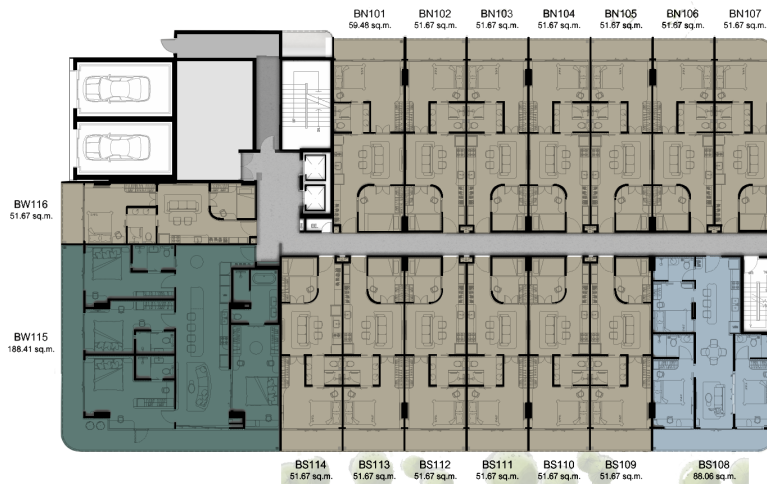
TOWER B



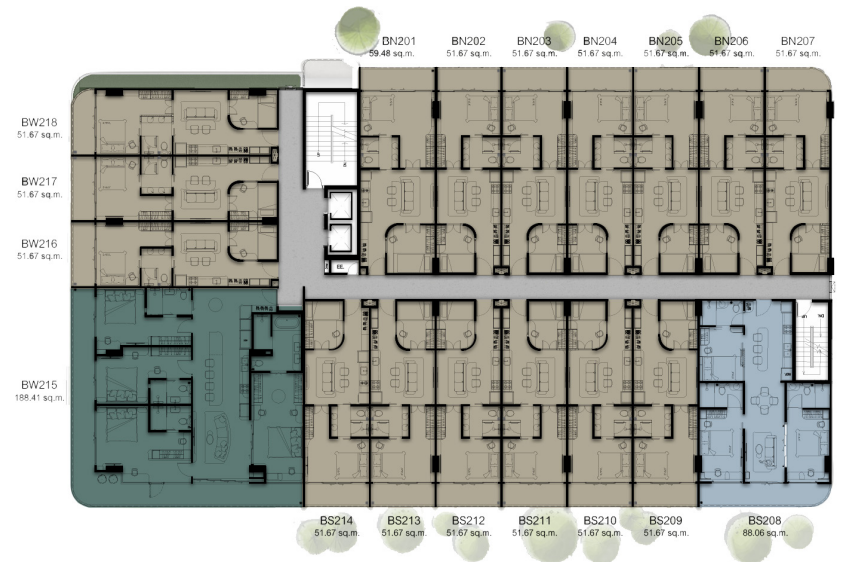
G2
UNDERGROUND PARKING



FACILITIES

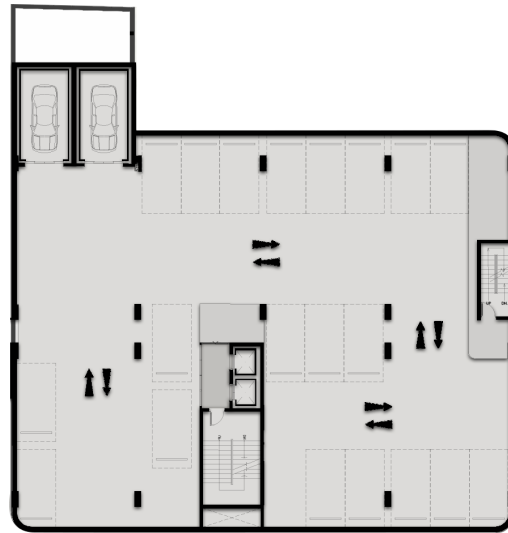


1ST FLOOR PLAN

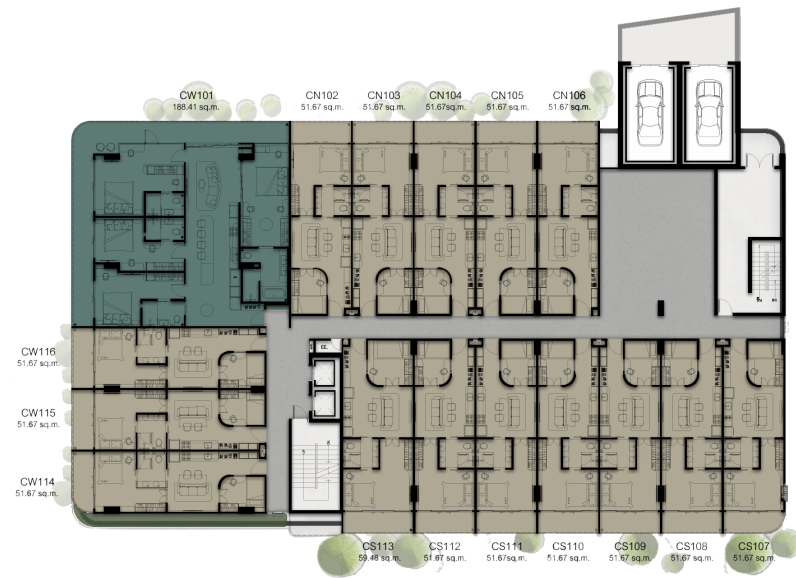


2ND - 8TH FLOOR PLAN

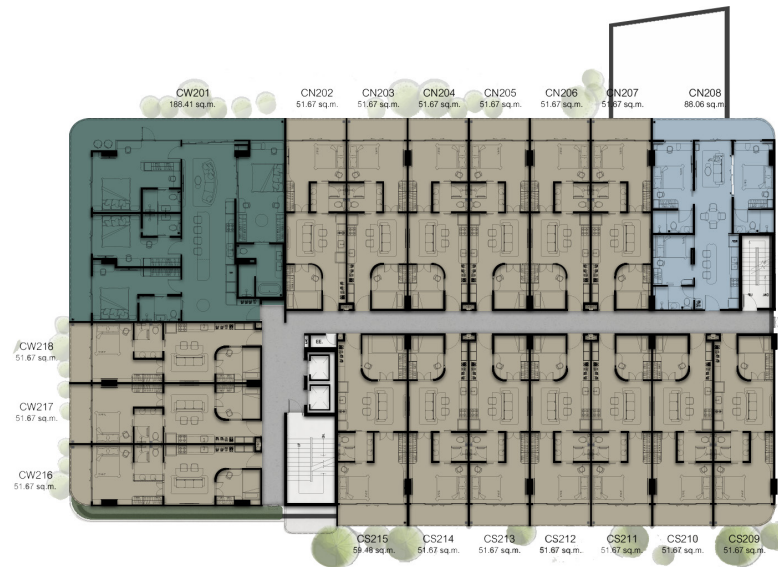
TOWER C



G1
UNDERGROUND PARKING

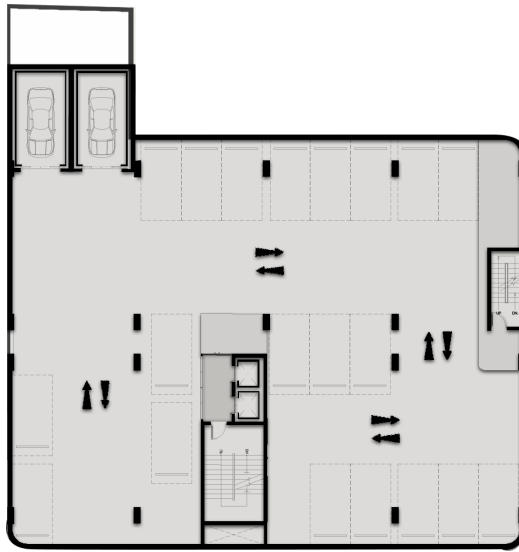


1ST FLOOR PLAN



2ND - 8TH FLOOR PLAN

TOWER D



G1 - G3
UNDERGROUND PARKING



1ST FLOOR PLAN

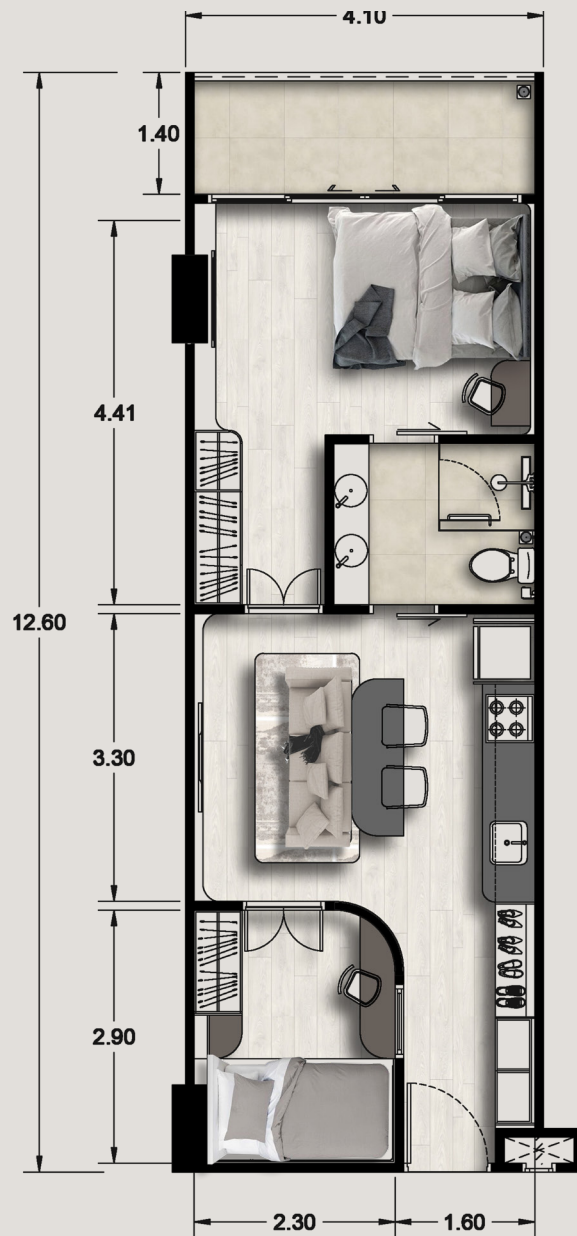


2ND - 8TH FLOOR PLAN

*COMPUTER GENERATED IMAGE

SPACIOUS AL FRESCO BALCONY





2 BEDROOM

STARTING AREA
 51.67 - 59.48 SQ.M.

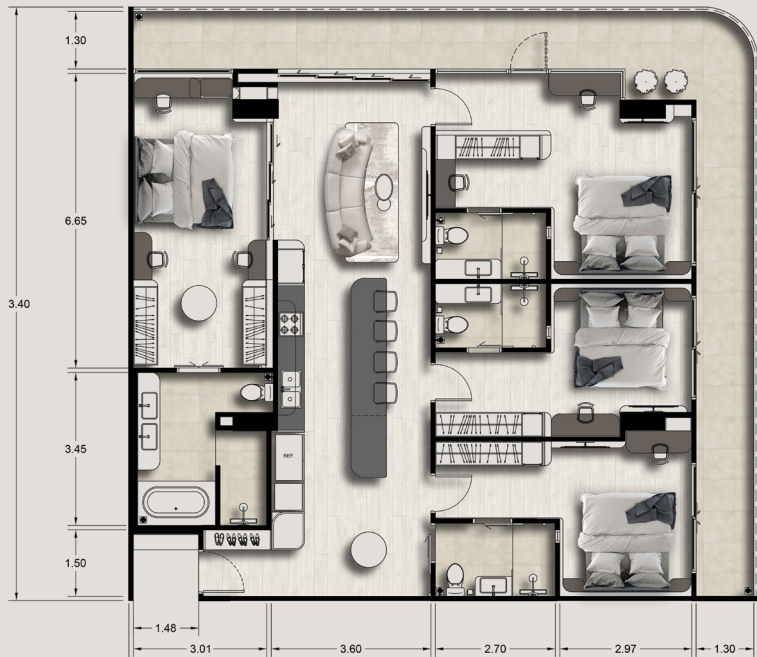
*Area is approximate and may vary



3 BEDROOM

STARTING AREA
88.06 - 102.05 SQ.M.

*Area is approximate and may vary



4 BEDROOM

STARTING AREA
178.85 - 188.41 SQ.M.

*Area is approximate and may vary



•COMPUTER GENERATED IMAGE



EVER PRIME
DEVELOPMENT CO., LTD.

- Ever Prime Residence** Comprising : 449 units
Project owner : Ever Prime Developmet co., ltd
Registered capital : 104,000,000 Baht (paid in full)
Project Location : 1 Patak Rd, Karon, Mueang Phuket District,
Phuket 83100 Thailand
Completion expected : December 2028
Maintenance Fee : The Maintenance fee is paid individually by
condominium unit owners and covers all common areas, security, pest control,
rubbish collection and estate management service.

(All specifications are subject to change without notice.)



EVER PRIME
RESIDENCES
— *by Anocha* —

+66 99 - 259 6525, +66 85 - 562 1146, +66 96 - 186 8888

 WWW.EVERPRIMECONDO.COM  EVER PRIME PHUKET